



FARMINGTON PATHWAYS COMMITTEE

10:00 a.m.

AGENDA

MAY 31, 2023

1. CALL TO ORDER
2. ROLL CALL
3. APPROVAL OF AGENDA
4. NEW BUSINESS
 - a. MEETING WITH SEMCOG
 - i. Discussion of Farmington Non-motorized Pathway Projects
 - ii. Walk to Shiawassee Park
 - iii. Walk to McGee Hill
5. PUBLIC COMMENT
6. COMMITTEE MEMBER COMMENT
7. ADJOURNMENT

Next meeting: JUNE 14, 2023 at 7:00pm



Pathways Committee Presentation to SEMCOG

City of Farmington Pathways Committee

May 31, 2023

Pathways Committee

Members

Tim Prince - Chair

Sue Lover - Vice-Chair

Joe VanDerZanden - Secretary

Maria Taylor - Council Representative

Chris Weber - Director of Finance

Kevin Christiansen - Economic and Community Development Director

Bill Gesaman

Brent Bartman

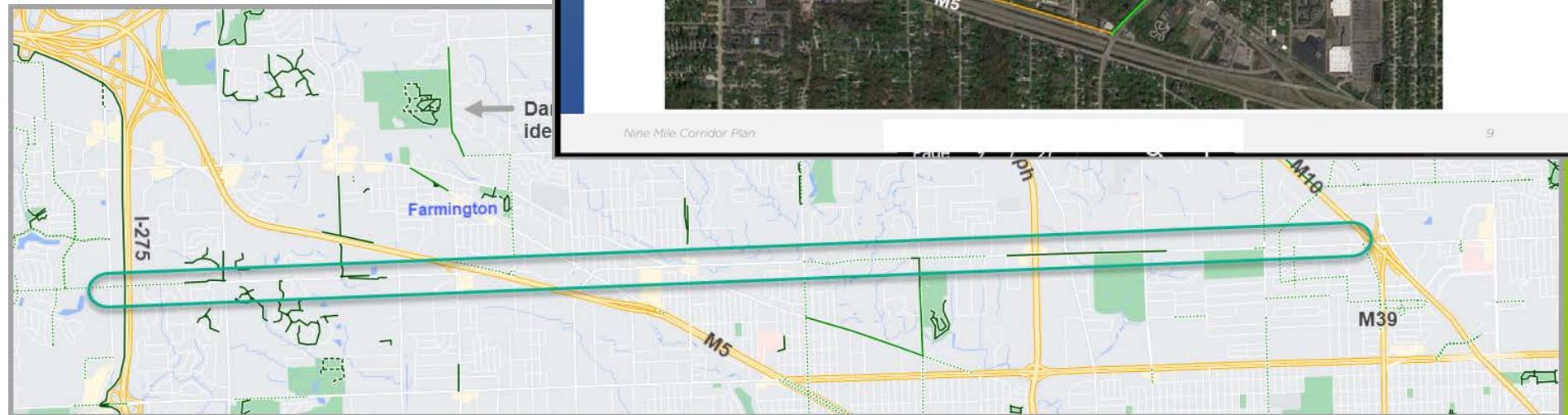
Kevin Parkins

Mission Statement:

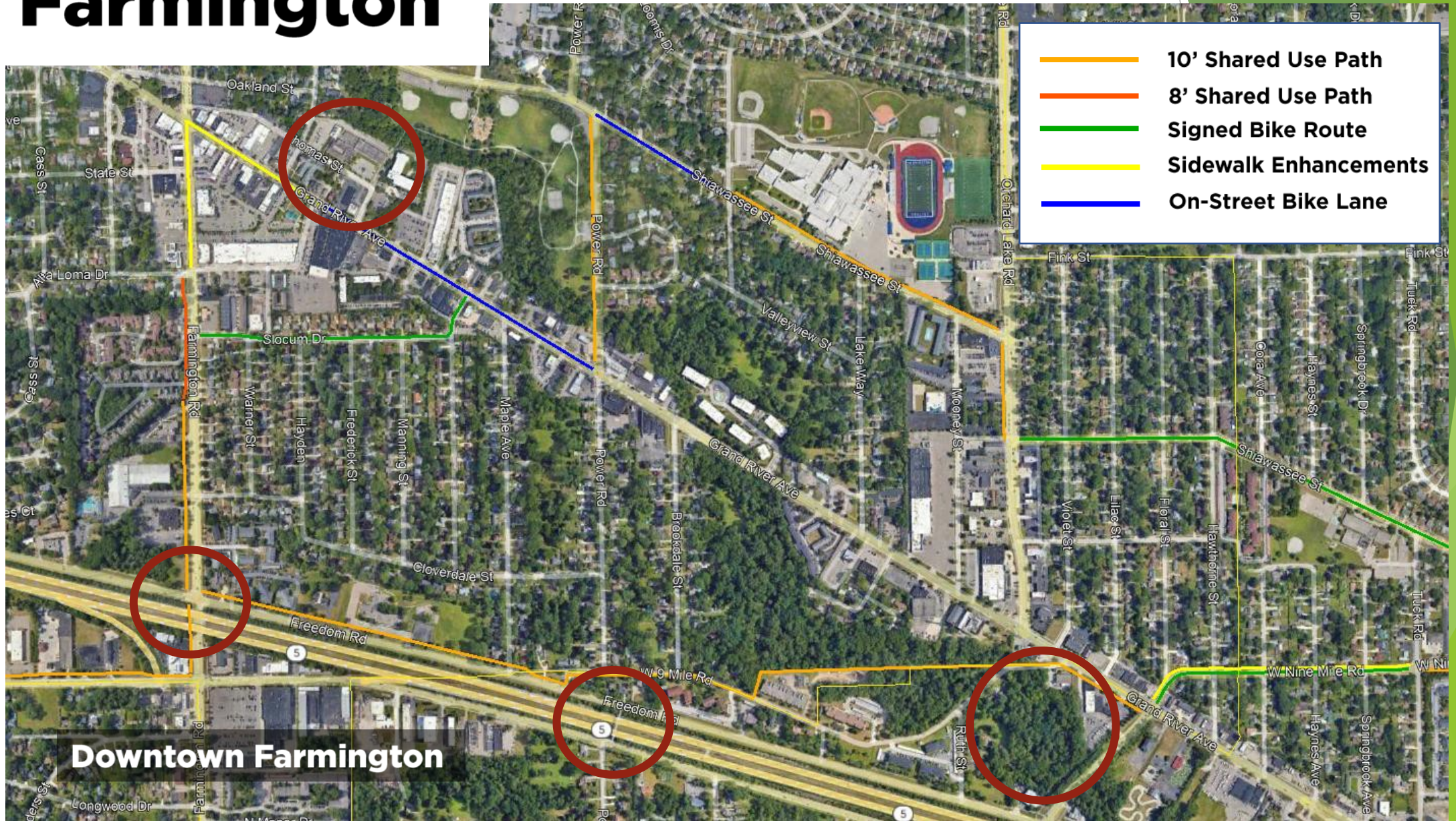
"[The] mission of the Pathways Committee shall be to study, evaluate, and make recommendations on an ongoing basis to the City, including the City Council, with regard to improving or creating new pathways in the City and their connections to surrounding community, county, and regional systems."

Non-motorized path on 9 Mile road between Woodward and I-275

- ▶ Met with other cities and planning is underway.
- ▶ Pathways committee gave recommendations for options to improve access to downtown Farmington via this new pathway.
- ▶ North and South options may be built to give choice of scenic and direct routes from 9 Mile rd.
- ▶ Look for additional Community Outreach (survey, farmer's market) during Spring & Summer 2023
- ▶ [News article from December 2022](https://www.candgnews.com/news/they-want-more-trails-and-pathways-1376)
<https://www.candgnews.com/news/they-want-more-trails-and-pathways-1376>



Farmington



Maxfield Training Center / Hillside Project



Current Condition of Stairs

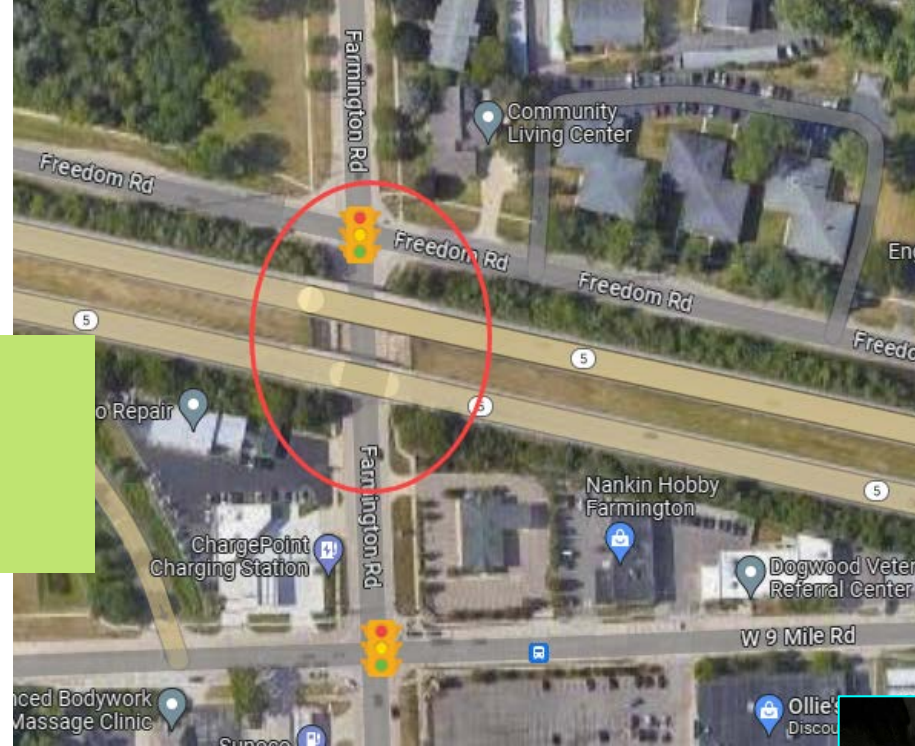


9 Mile overpass

Sidewalk-only passthrough

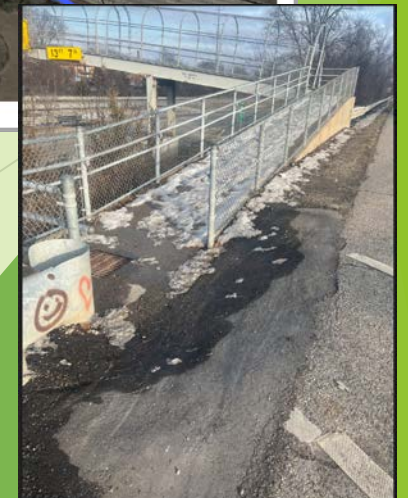
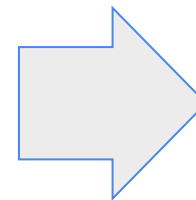
Too narrow & congested for dedicated bike lane

2 traffic lights within 100yds



M5 pedestrian bridge (Farmington Hills)

- ▶ Pedestrian Bridge crossing M5, Folsom to Freedom between Farmington and Orchard Lake Rds.
- ▶ Bridge acts as an easy non-motorized connector to Farmington for neighborhoods south of M5.
- ▶ Farmington Hills will include Freedom & Folsom Rd improvements in their 2024 budget. [top image]
- ▶ MDOT made temporary improvements to Folsom side of the bridge in 2022. [bottom images]



The Historic Winery

9 Mile Road and Grand River Avenue

A true gateway to the river trail and community, the Historic Winery invites visitors into the site to experience some of the treasures of the Rouge River and the Farmington Area. Viewing the iconic Detroit United Railway Powerhouse building and tower in the distance, visitors are already struck by the character of the site as they approach the winery from afar. Whether coming to enjoy a quiet walk by the river, dinner at the new local restaurant and the patio overlooking the forest, or even another day at the office, the beauty of the winery's setting is undeniable. Combined with the activity within the building, the site creates a lively and engaging experience at the winery that integrates the economic development of the site with the river itself.

To the east of the winery building, the upland portion of the site offers visitors with flexible open space that can host a variety of events and activities in a more formally designed setting. Here, one can imagine lounging in the grass, catching the last of the afternoon sun before returning home after a walk, or listening to the sounds of laughter and play while enjoying lunch on a shade-dappled patio. A small loop in the walking path surrounds an open lawn area and rain garden features that help treat and store rainwater from the winery and parking lot. Ornamental trees add to the rich sensory experience and seasonal interest of the site. Views from the top of the hillside reveal that the winery is much more than first meets the eye as one peers through the forest to catch glimpses of the river.



View of Historic Winery and former powerhouse smokestack



Design boundary for Historic Winery

Figure 6-3: Plan for Historic Winery Site¹

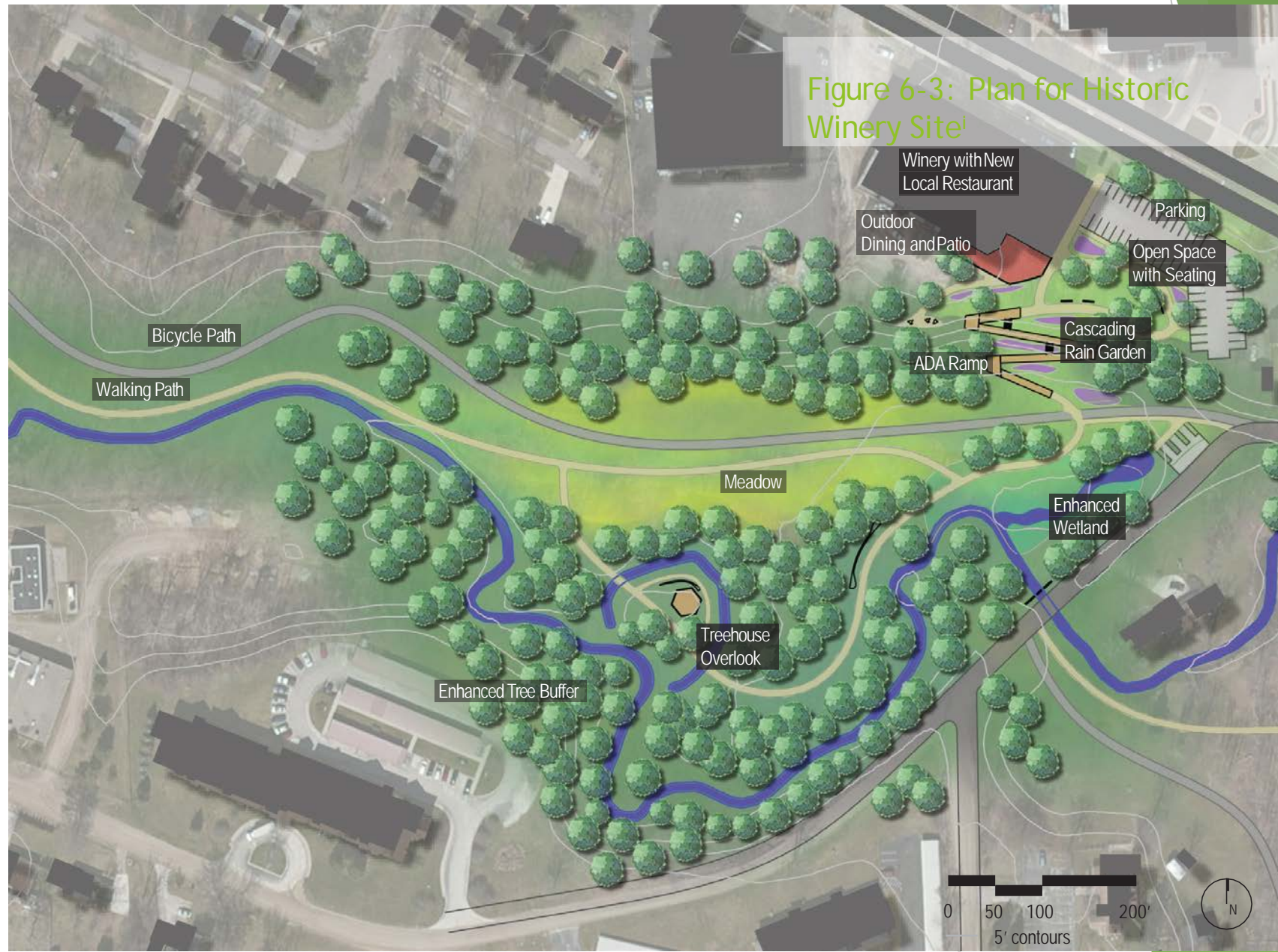
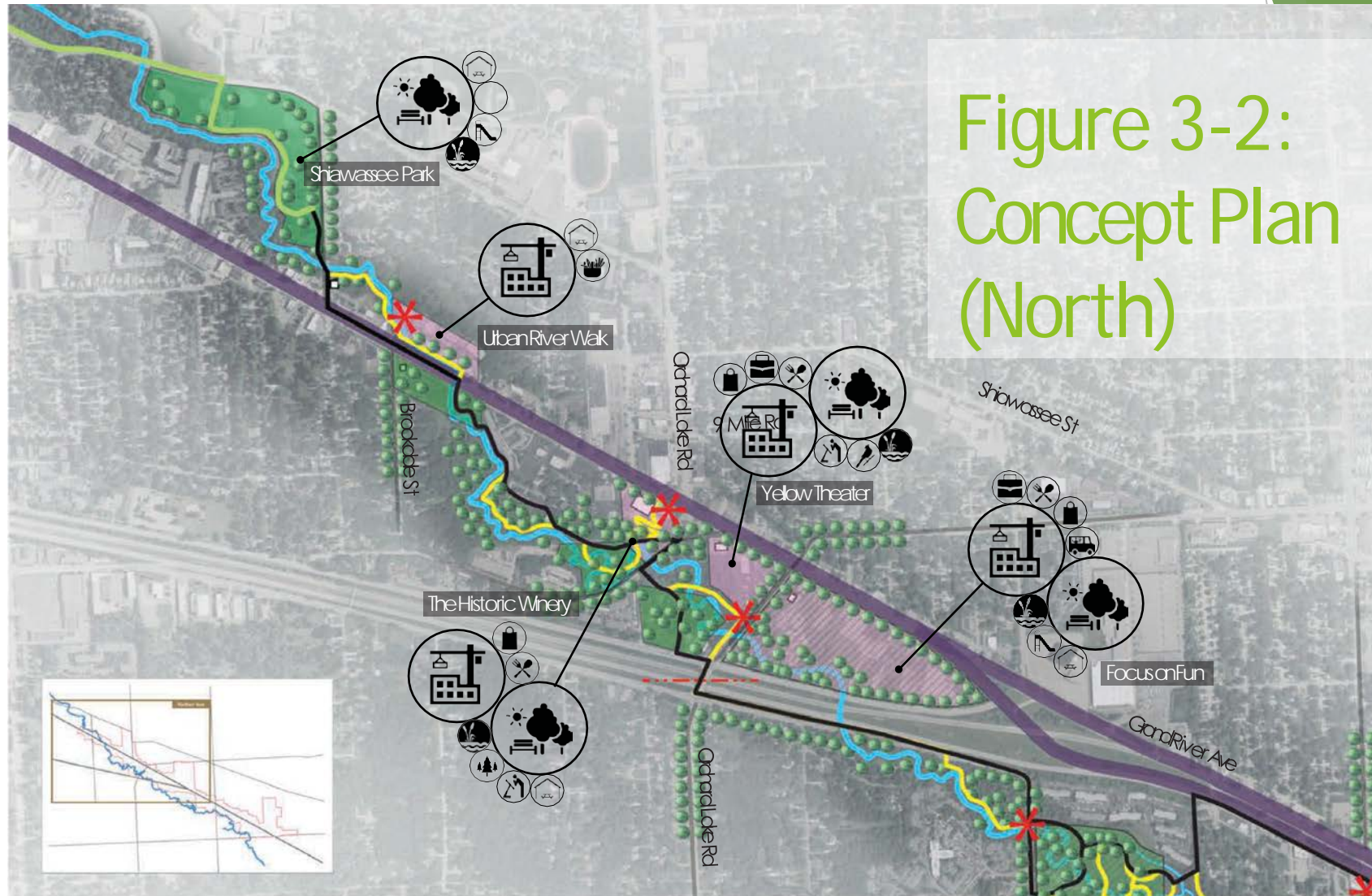
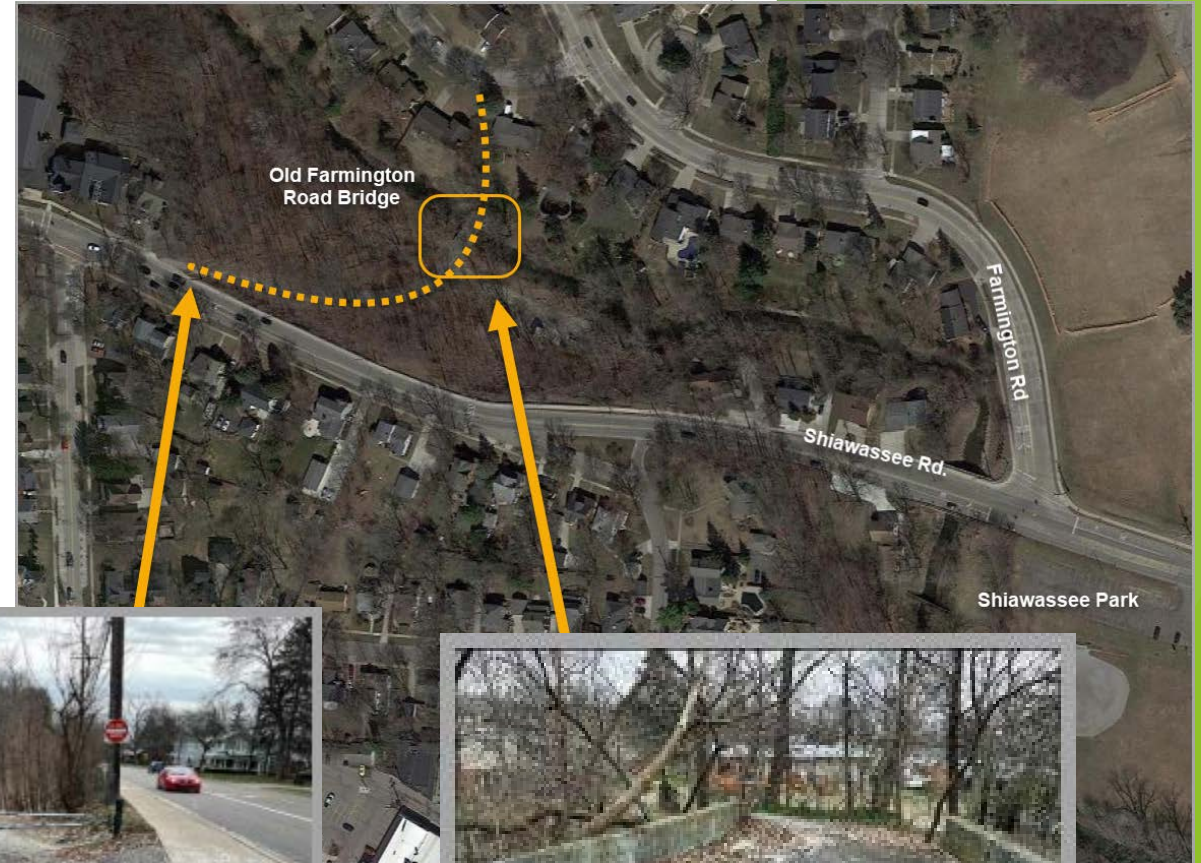


Figure 3-2: Concept Plan (North)



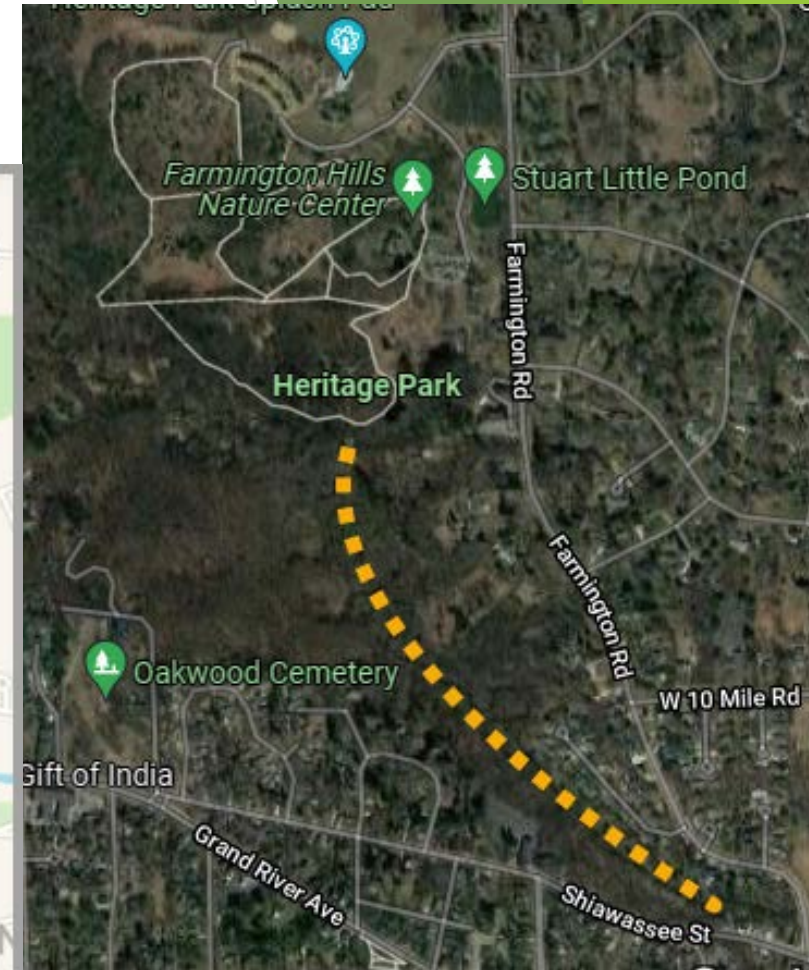
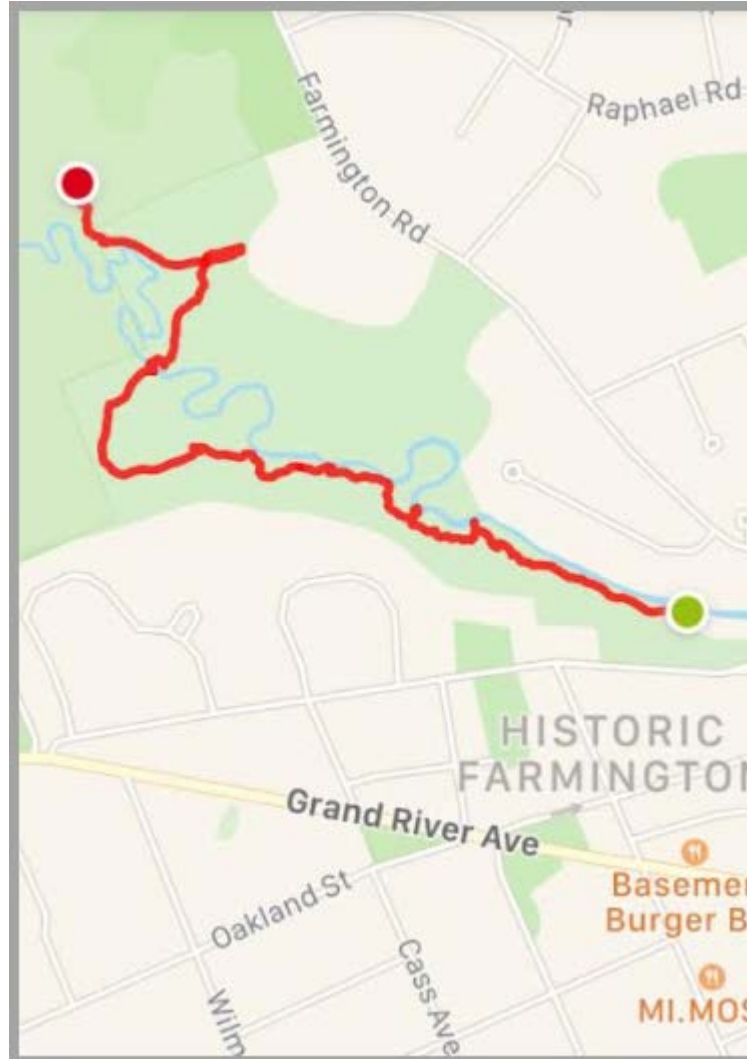
McGee Hill, Old Farmington Road bridge

- ▶ Worked with Eastern Michigan Univ. Civil and Environmental Engineering Department (EMU Heavy Highway CNST 436.) to develop ideas for solutions.
- ▶ Trail is used by the surrounding neighborhoods, Farmington Run Club and others to connect to downtown.
- ▶ EMU report available for review.



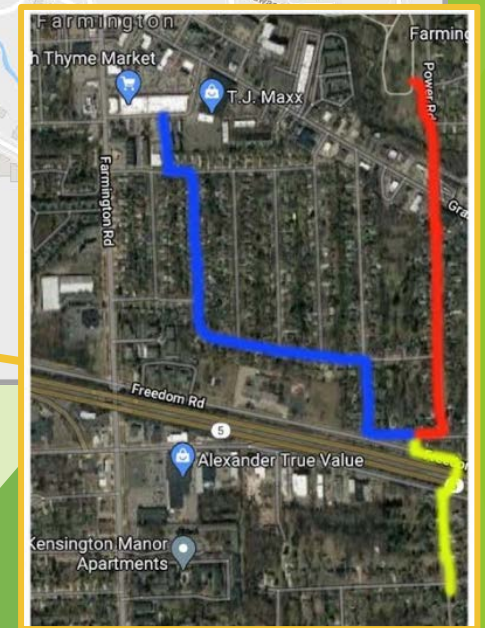
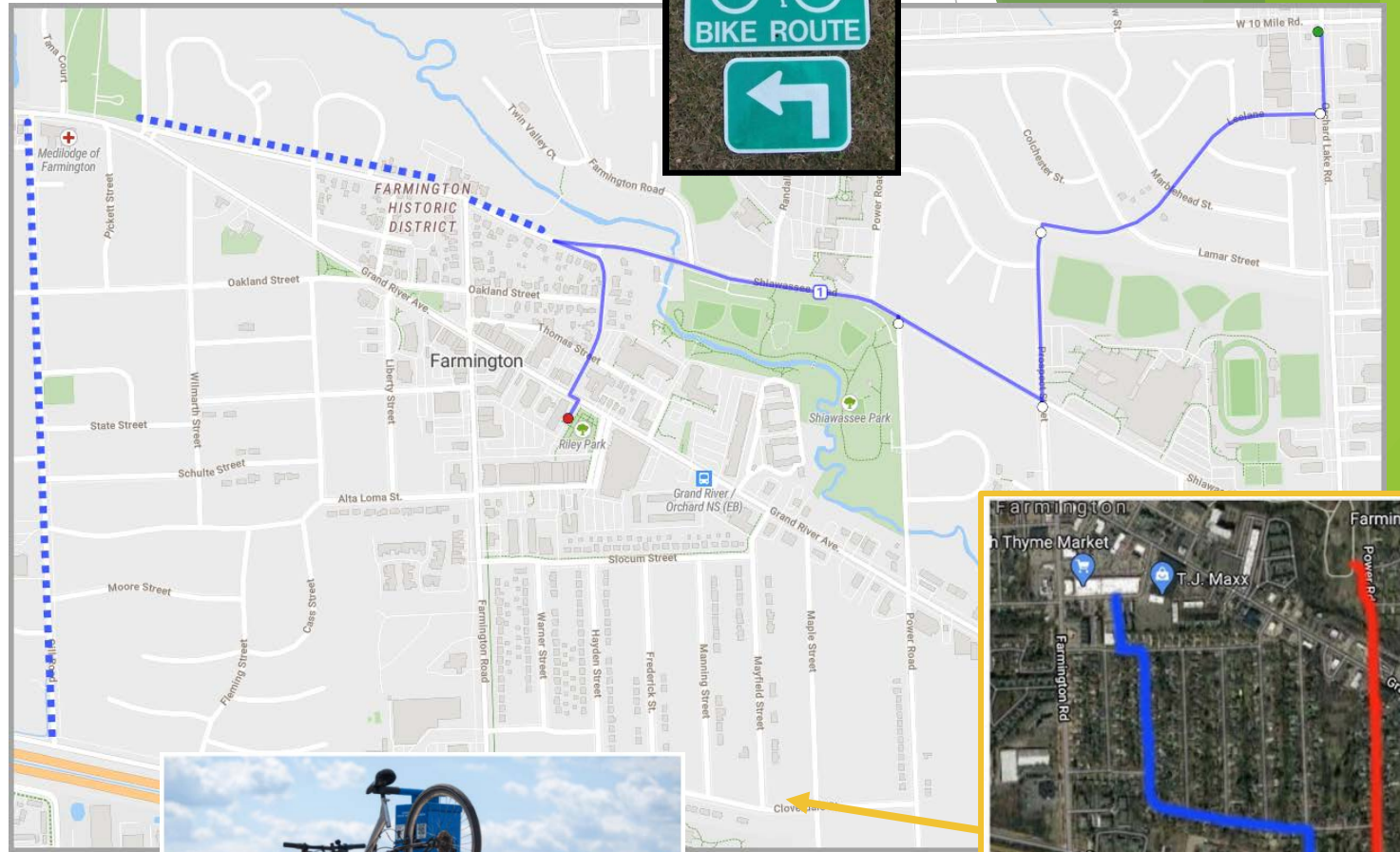
Heritage Park Path Connection

- ▶ Attempted to identify a nature path between Shiawassee and Heritage parks.
- ▶ Two walks were completed, both beginning at the Old Farmington Road Bridge, northward towards Heritage Park.



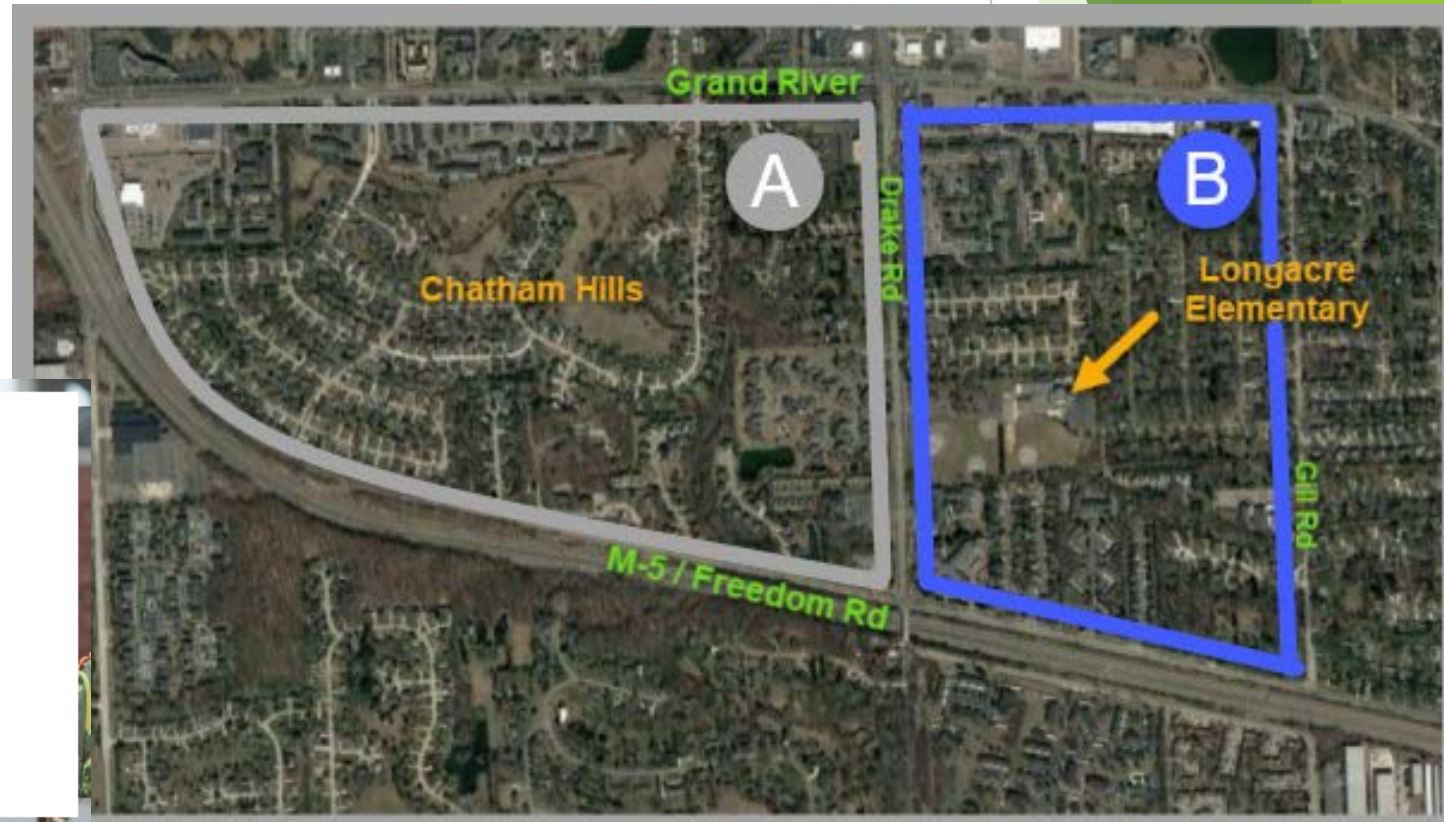
Bike lanes: Shiawassee St, Gill Rd

- ▶ Explored establishing designated bike routes on Shiawassee and Gill Roads.
- ▶ Worked with City Engineers for feasibility and cost estimates.
- ▶ Also hope to safely connect other parts of the city and surrounding areas to downtown Farmington.
- ▶ Pathways reviewed bike repair stand options for potential placement downtown.
- ▶ Field trip to Ferndale to see how other communities have incorporated safe biking options.



Safe Routes To Schools

- ▶ Working with Safe Routes to Schools representative and Longacre Principal to find ways to improve the connections from surrounding neighborhoods to Longacre School for improved walkability.
- ▶ Determined that (A) Chatham Hills connection was not feasible at this time.
- ▶ Currently considering options to improve connection to Longacre Elementary from the East (B) Gill & Arundel road



Safe Routes To School Goals

Encourage and enable all school children, to walk and bicycle to and from school when distance is reasonable and routes are safe

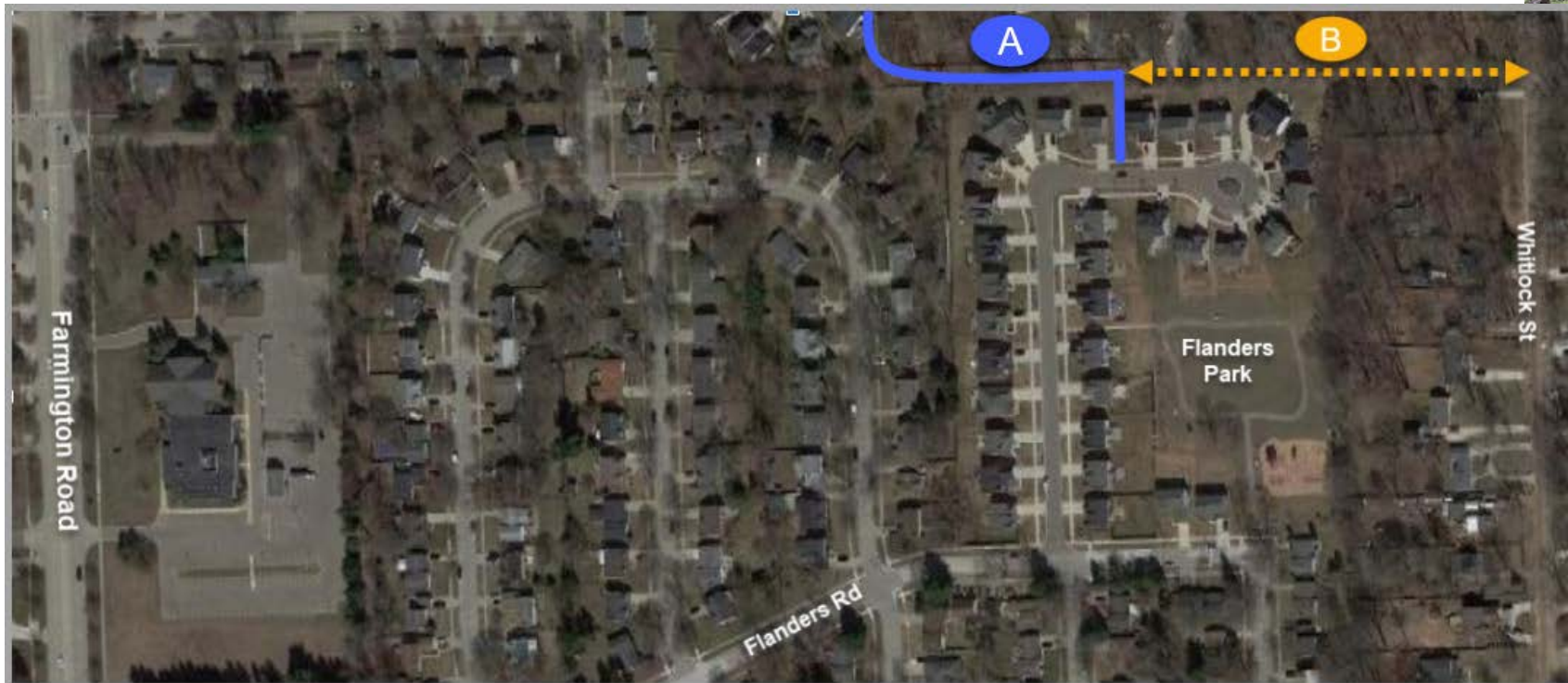
Promote lifelong habits of physical activity

Make walking and bicycling routes to school safer

Reduce traffic and pollution around schools

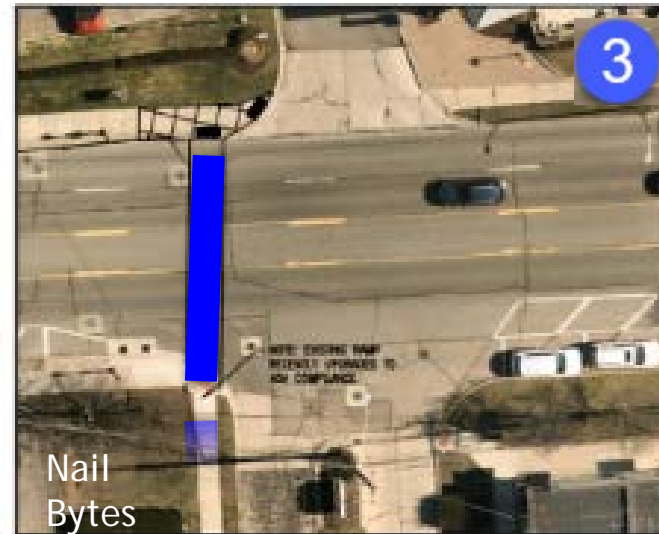
Flanders Subdivision Riverwalk Path

- ▶ Recommended to Farmington Hills and City of Farmington to reconnect the path between the Riverwalk neighborhoods and Flanders Park.
- ▶ Riverwalk of Farmington Hills (A) paving completed in 2022.
- ▶ Eastward to Whitlock St. (B) remains unimproved at this time. DPW is aware and considering next steps for 2023/2024



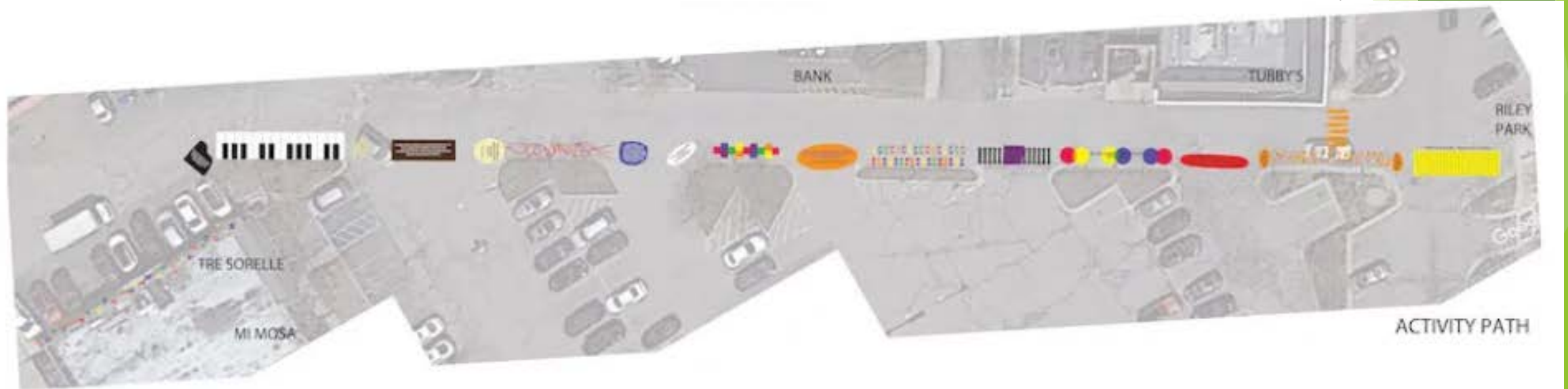
Krazy Krab Crosswalk

- ▶ City of Farmington, OHM [engineering firm] and MDOT working together on a crossing solution.
- ▶ Pathways made recommendation:
 - (3) Nail Bytes to Sidecar parking lot east side.
- ▶ Other options include
 - (1) Ace Hardware to School Street
 - (2) Krazy Crab to Sidecar Parking lot West side.
- ▶ Decision and installation date TBD.



Library Storybook Path

- ▶ Walking Storybook Path from Farmington Library to Riley Park
- ▶ Library, DDA, & Pathways Committee working together to determine a solution and recommend timing to coordinate with existing improvement projects.



Thank you to City Council for recognizing the importance of a bike and pedestrian friendly, ADA compliant city.

- ▶ For more information, see the [City of Farmington website](#), where minutes from all meetings are posted.
- ▶ **Join us!** We have standing agenda items for public comment and to identify new areas of concern/opportunity.
- ▶ Contact us at Pathways@farmgov.com with any questions.
- ▶ Watch for more pathways-related posts on City of Farmington Social Media accounts.

FARMINGTON PATHWAYS COMMITTEE

2023 PRIORITIES



Top Priorities



Complete Streets Plan



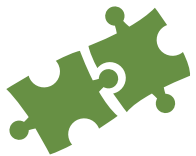
Safe Routes to School



9 Mile Pathway



McGee Hill Bridge



Riley Park connection to Shiawassesee Park

Additional Priorities

- Crosswalk/sidewalk needs list
- Crosswalk near Krazy Krab
- Shiawassesee bike lanes
- Bike repair stand downtown
- Heritage Park Path
- Thomas St Signage
- Social media sharing
- Existing project follow-up